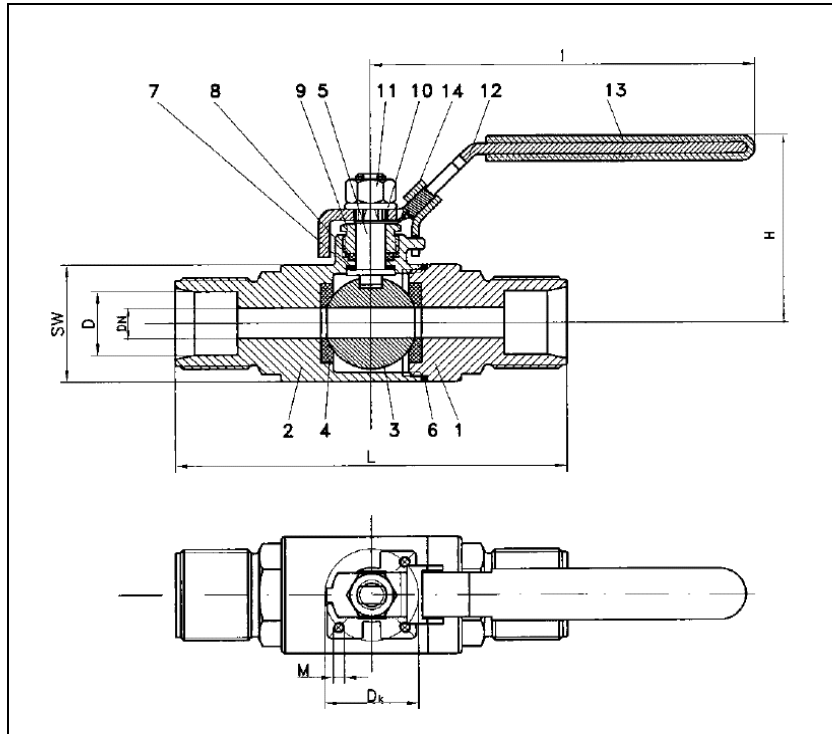


BALL VALVES RK-PROBALL

KH 2T K HP, DN4 - DN16, PN160



High-pressure ball valve with clamping ring connection full bore face to face DIN 3202 V1

Specification:

Two-piece ball valve with clamping ring connection, high pressure PN 160, full bore, blow-out-proof stem, body material lost wax cast stainless steel (1.4408), free of non-ferrous metals, seat KFG/KFM, stem packing KF, top flange DIN EN ISO 5211, design acc. to EN 19, safety spring locking device is optional.

Marking: RK-Proball
Type: KH 2T K HP-1.4408

No.	Part	Material
1	body	1.4408
2	cap	1.4408
3	ball	1.4408
4	seat	KFG/KFM
5	stem	1.4401
6	seal	KFG
7	thrust washer	PTFE
8	stem packing	KF
9	gland nut	1.4301
10	washer	1.4301
11	nut	1.4301
12	lever	1.4301
13	insulation cover	Vinyl
14	spring locking device*	1.4301

* special type



Ordering example:
KH 2T K HP, DN6, PN 160, 1.4408, safety spring locking device

Dimensions

DN mm	PN	dimensions (mm)				SW**	top flange ISO	D _k	M	Kv-value m ³ /h	weight kg
		D	L	H	I						
4	160	6	76	50	102	22	F04	42	M5	2	0.25
6	160	8	76	50	102	22	F04	42	M5	3	0.25
8	160	10	76	50	102	22	F04	42	M5	5	0.25
10	160	12	80	50	102	22	F04	42	M5	6	0.35
12	160	15	96	50	102	24	F04	42	M5	7	0.35
16	160	18	105	52	102	34	F04	42	M5	9	0.65

** width across in mm

Subject to modification. 02/2017